

GENERAL INFORMATION ONLY. REFER TO DISTRICT STANDARDS
FOR MORE DETAILED INFORMATION.

GENERAL NOTES:

- A. A DISTRICT PERMIT IS REQUIRED FOR ALL SIDE SEWER INSTALLATIONS. MAIN LINE SEWER SHALL BE IN USE AND OPERATION.
- B. LEGAL DESCRIPTION AND ADDRESS REQUIRED TO OBTAIN PERMIT.
- C. NO DOWNSPOUTS, FOOTING DRAINS, OUTSIDE DRAINS OR ANY SOURCE OF GROUND OR SURFACE WATERS ARE ALLOWED TO CONNECT TO SIDE SEWER.
- D. SIDE SEWER IS INSTALLED BY A CONTRACTOR, A CURRENT STATE LICENSE NUMBER IS REQUIRED ON PERMIT. THE PROPERTY OWNER INSTALLING THE SIDE SEWER SHALL INDICATE SO ON THE PERMIT. ALL WORK WITHIN PUBLIC RIGHT-OF-WAY WILL REQUIRE A STATE LICENSED CONTRACTOR TO INSTALL.
- E. MAXIMUM OF 100 FEET BETWEEN CLEANOUTS. CLEANOUTS REQUIRED AT CONNECTIONS TO BUILDINGS AND FOR AGGREGATE BENDS GREATER THAN 45°, (AGGREGATE BENDS BEING A COMBINATION OF BENDS GREATER THAN 45° WITH LESS THAN 4° OF STRAIGHT PIPE BETWEEN BENDS.) SEE DEVELOPMENT GUIDELINES FOR INFORMATION ON CLEANOUTS. CLEANOUT SHALL BE A WYE LATERAL AND SHALL BE BROUGHT TO WITHIN 18" OF SURFACE IN LANDSCAPED AREAS. IN PAVED & CONCRETE AREAS CLEANOUTS SHALL BE BROUGHT TO SURFACE WITH A LOCKING FRAME AND COVER IN ACCORDANCE WITH DISTRICT STANDARDS.
- F. PIPE SHALL BE BEDDED WITH PEA GRAVEL OR 5/8 MINUS, CRUSHED ROCK IF APPROVED BY THE DISTRICT. OVER-EXCAVATION SHALL BE BROUGHT TO GRADE WITH SELECT BACKFILL AS DIRECTED BY THE DISTRICT.
- G. ALL JOINTS SHALL BE RUBBER GASKET TYPE, EXCEPT ABS & PVC SCHEDULE 40 MAY BE SOLVENT WELDED TYPE.
- H. PARALLEL WATER AND SEWER LINES SHALL BE 10 FEET APART HORIZONTALLY WHEREVER POSSIBLE.
- I. SIDE SEWER SHALL BE VISUALLY INSPECTED AND TEST WITNESSED BY DISTRICT. SIDE SEWER SHALL BE PLUGGED AND TESTED IN PRESENCE OF DISTRICT. AFTER BEDDING, PRIOR TO BACKFILLING. AFTER 15 MINUTES THERE SHALL BE NO VISIBLE OR MEASURABLE LEAKAGE. THE SYSTEM SHALL BE WATERTIGHT. AIR TESTING AFTER PIPE IS SECURED, AT 4 PSI FOR 5 MINUTES WITH NO PRESSURE LOSS IS ACCEPTABLE IN LIEU OF WATER TEST.
- J. ALL MATERIALS AND WORKMANSHIP TO COMPLY WITH UNIFORM PLUMBING CODE AND APPLICABLE DISTRICT DEVELOPMENT GUIDELINES AND STANDARDS. CONTACT THE DISTRICT FOR MORE INFORMATION.
- K. A PRE-CONSTRUCTION MEETING IS REQUIRED FOR ALL WORK OCCURRING IN PUBLIC RIGHT-OF-WAY, AND/OR WHEN A TAP ON THE EXISTING MAIN IS REQUIRED.
- L. SEE CVWD SIDE SEWER SPECIFICATIONS FOR ADDITIONAL INFORMATION.
- M. SLOPE FOR SIDE SEWERS SHALL BE 2% MIN. TO (45°,100%) MAX.

- 1 IF APPLICABLE, TAPPING SADDLES SHALL BE: ON DUCTILE IRON MAIN: ROMAC, FORD OR SMITH-BLAIR SST. ON CONCRETE OR PVC; ROMAC CB OR APPROVED EQUAL.
- 2 CONNECTION TO MAIN LINE TO BE OF LIKE MATERIALS, EXCEPT WHEN MAIN IS CONCRETE. CONSULT THE DISTRICT. ALL SEWER LATERALS LOCATED WITHIN EASEMENTS & RIGHT OF WAY, SHALL BE 6" OR LARGER. FOR MATERIALS SEE CVWD SIDE SEWER SPECIFICATIONS, SECTION 7. OUTSIDE OF RIGHT-OF-WAY OR EASEMENT, SIDE SEWER PIPE SHALL BE 4" OR LARGER FOR SINGLE FAMILY AND 6" OR LARGER FOR ALL OTHER USES.
- 3 TRANSITIONS OF DIFFERENT MATERIAL TYPES SHALL BE WITH ROMAC STYLE 501 COUPLING OR EQUAL.
- 4 TEST TEE REQUIRED AT PROPERTY LINE. INSTALL SAME SIZE AS SEWER STUB.
- 5 6" BY 4" OR 8" BY 6" REDUCER, WHERE REQ'D.
- 6 45° BEND, IF NEEDED (TYP).
- 7 ON PRIVATE PROPERTY, MINIMUM COVER SHALL BE 18".
- 8 CLEANOUT (SEE NOTE "E")
- 9 CONNECT WASTE-LINE TO SIDE SEWER CONNECTION WITH APPROVED ADAPTORS. CONNECTION WITH CLEANOUT TO BE 2.5'-5' OUT FROM STRUCTURE.
- 10 IF AN EXISTING SEPTIC TANK IS PRESENT, CAP AND PLUG PIPE AND ABANDON TANK PER APPLICABLE COUNTY/CITY HEALTH DEPARTMENT.
- 11 COMPLY WITH RESTORATION REQUIREMENTS SET FORTH IN RIGHT-OF-WAY PERMIT AND/OR DISTRICT DEVELOPMENT GUIDELINES.

**CROSS VALLEY WATER DISTRICT
SIDE SEWER DETAILS**

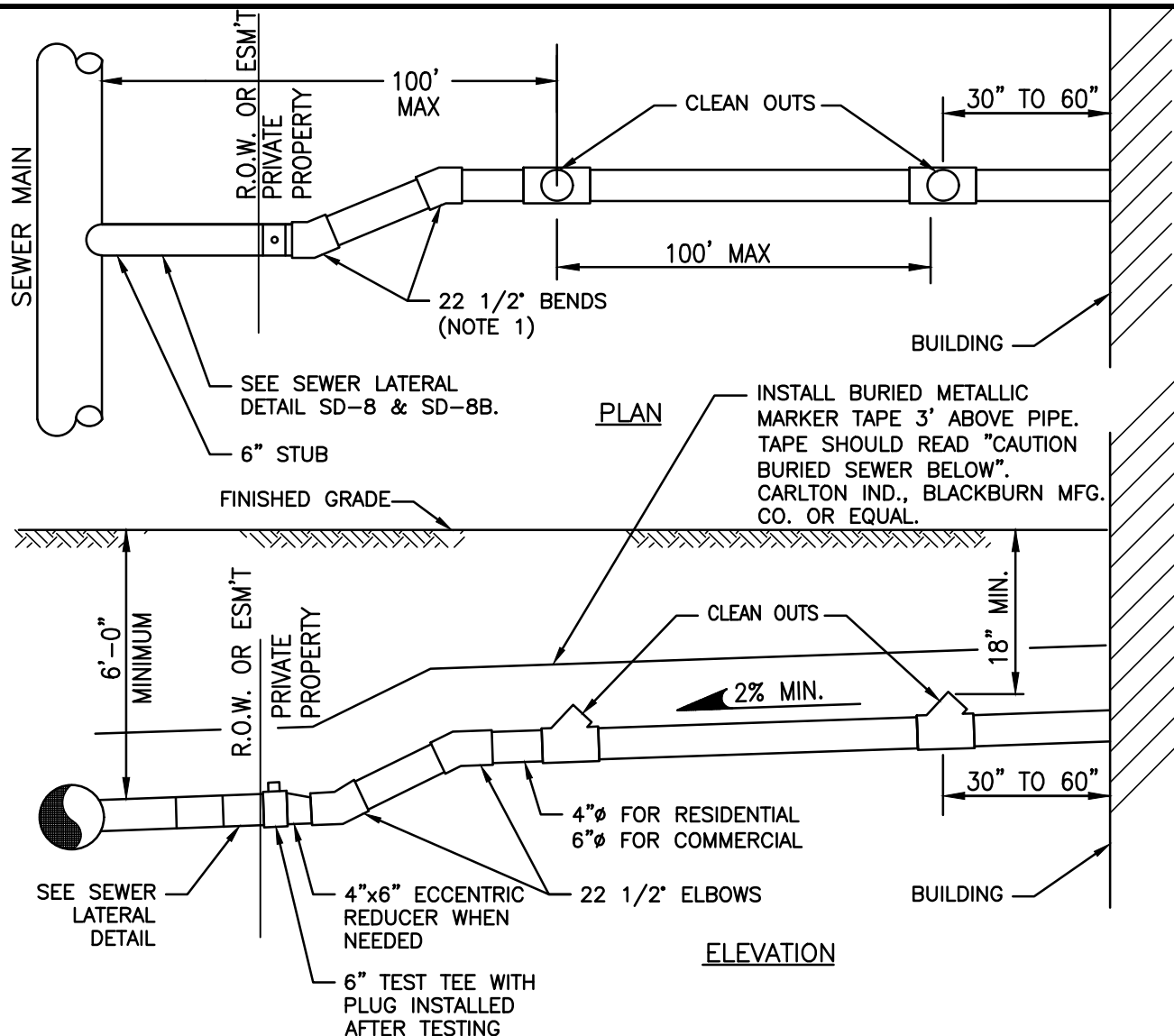
STANDARD SIDE SEWER

SS-1

NOT TO SCALE

FEB 2022

FILE NAME: \\K-FSI\LIBRARY\CAD\DETAILS\DISTRICTS\CROSS VALLEY WATER DISTRICT\SS-2.DWG



NOTES:

1. BENDS SHALL NOT BE GREATER THAN 45°.
2. CLEAN OUT IS REQUIRED FOR EACH PIPE LENGTH GREATER THAN 100' AND FOR EACH 90° ACCUMULATED BEND.
3. RIGHT-OF-WAY RESTORATION SHALL MATCH OR EXCEED THE ORIGINAL CONDITION.
4. ONLY PLUMBING OUTLETS SHALL BE CONNECTED TO THE SEWER. NO DOWNSPOUTS, FOOTING DRAINS OR STORM DRAINAGE MAY BE CONNECTED TO THE SEWER SYSTEM.
5. 18" MINIMUM COVER OF PIPE.
6. 6' MINIMUM COVER AT PROPERTY LINE.
7. LAY PIPE IN STRAIGHT LINE BETWEEN BENDS. MAKE ALL CHANGES IN GRADE OR LINE WITH A BEND OR WYE. 90° CHANGE WITH A BEND AND WYE.
8. 6" SEWER PIPE MINIMUM SIZE IN R/W & EASEMENTS.
9. 2% MINIMUM SLOPE. 45° (100%) MAXIMUM SLOPE. IF SLOPE EXCEEDS 45° FOR MORE THAN 3', SEE CVWD DETAIL SD-8.
10. CONSTRUCTION IN RIGHT-OF-WAY SHALL BE PERFORMED BY A REGISTERED LICENSED CONTRACTOR.
11. ALL CONSTRUCTION REQUIRES A PERMIT AND PAYMENT OF FEE. COMPLETE LEGAL DESCRIPTION OF PROPERTY AND DIMENSIONS.
12. RECORD DRAWING SHOWING LOCATION OF SIDE SEWER IN RELATION TO THE HOUSE IS REQUIRED AFTER INSTALLATION. PREPARED BY DISTRICT'S INSPECTOR.
13. SIDE SEWER MAINTENANCE FROM BUILDING TO PROPERTY LINE OR ESM'T, SHALL BE THE RESPONSIBILITY OF THE PROPERTY OWNER.

**CROSS VALLEY WATER DISTRICT
SIDE SEWER DETAILS**

**PRIVATE SIDE SEWER
INSTALLATION**

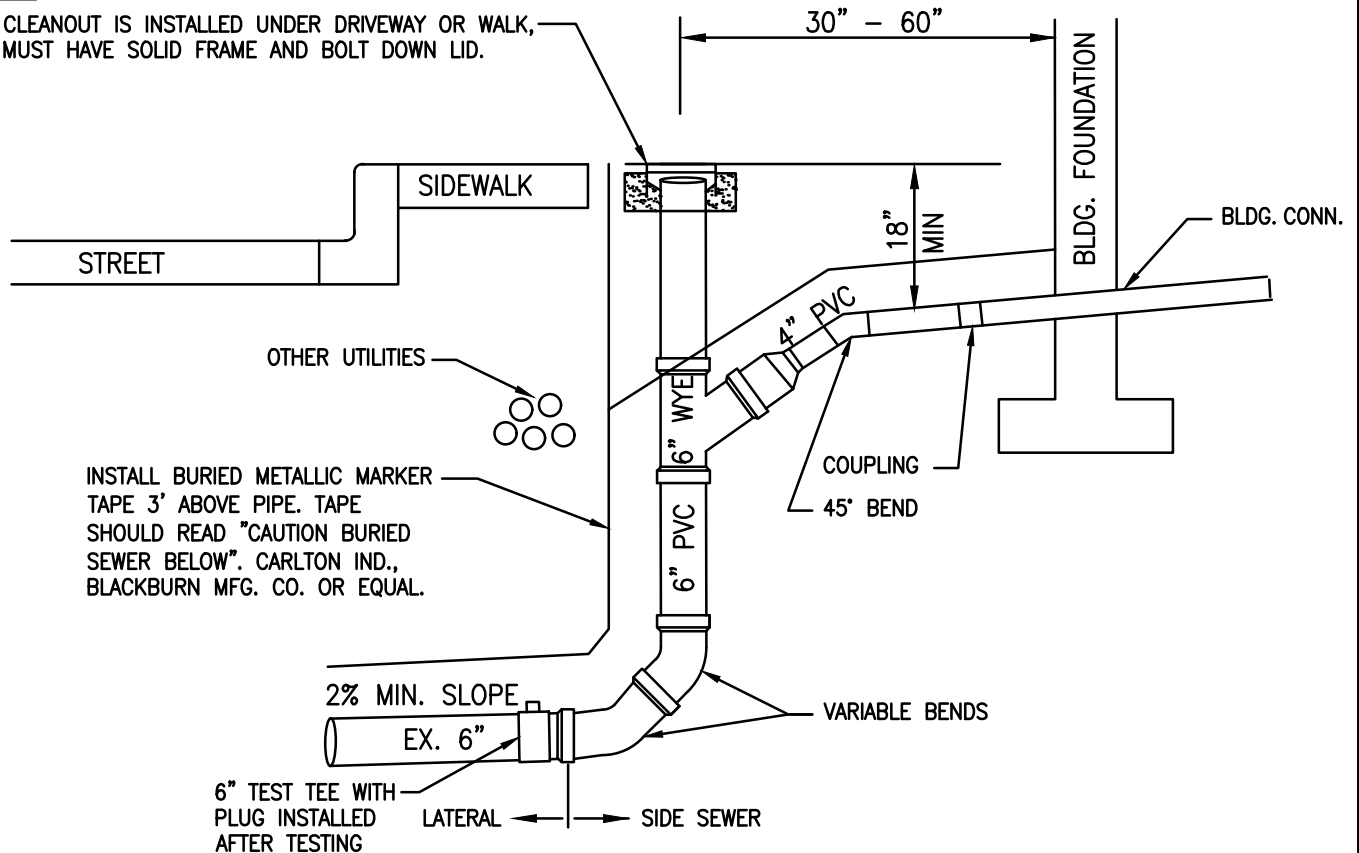
SS-2

NOT TO SCALE

FEB 2022

NOTE:

IF CLEANOUT IS INSTALLED UNDER DRIVEWAY OR WALK, IT MUST HAVE SOLID FRAME AND BOLT DOWN LID.



NOTES:

THIS METHOD MAY ONLY BE USED WITH PRIOR APPROVAL FROM THE DISTRICT AND ONLY WHEN STANDARD SIDE SEWER INSTALLATION PER DWG SS-1, OR SS-2 ARE NOT POSSIBLE BY EITHER:

1. CUTTING THE SIDE SEWER STUB BACK, ENABLING THE PIPE TO BE INSTALLED AT 100%, (45°, 1:1), OR LESS SLOPE (2% MIN) TO THE BLDG. CONNECTION
—OR—
LOCATED 30" FROM FOUNDATION AT MINIMUM OF 18" DEEP.
2. ROUTING THE SIDE SEWER PIPE TO EXTEND ALONG THE SIDE OF THE BUILDING TO DECREASE SLOPE.

**CROSS VALLEY WATER DISTRICT
SIDE SEWER DETAILS**

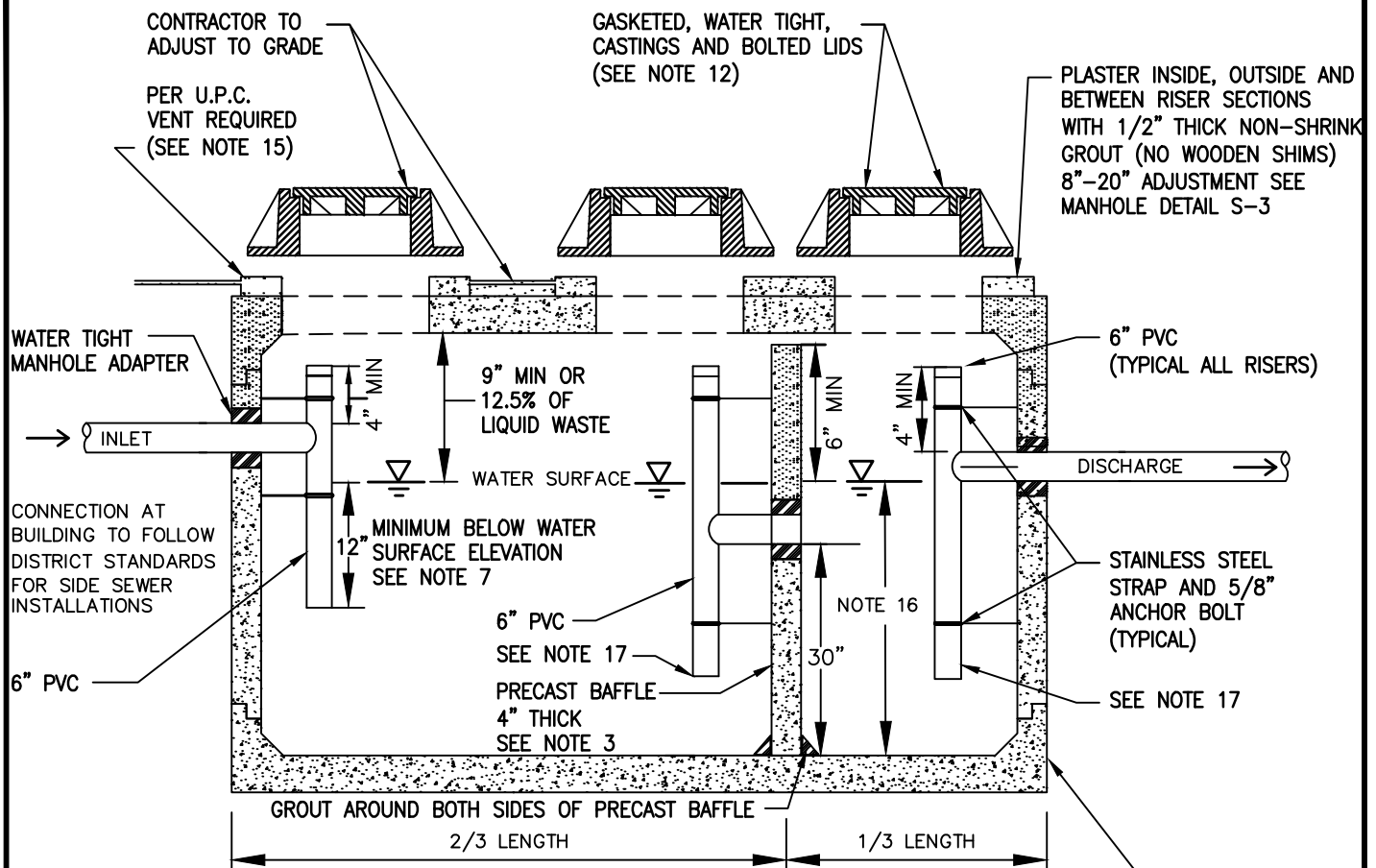
**ALTERNATE SIDE SEWER
INSTALLATION**

SS-3

NOT TO SCALE

FEB 2022

FILE NAME: \\K-FSI\LIBRARY\CAD\DETAILS\DISTRICTS\CROSS VALLEY WATER DISTRICT\SS-4.DWG



PRECAST CONCRETE VAULT, UTILITY VAULT CO. INC. OR EQUAL (SEE NOTE 4) SIZE ACCORDING TO UNIFORM PLUMBING CODE-MOST CURRENT VERSION INSTALL "PER MANUFACTURE REQUIREMENTS"

NOTES:

1. GRAY-WATER ONLY. BLACK-WATER SHALL BE CARRIED BY SEPARATE SIDE SEWER.
2. LOCATE INTERCEPTOR WITHIN CLOSE PROXIMITY OF DRIVE FOR ACCESS BY A MAINTENANCE VEHICLE.
3. IF VAULT IS NOT SLOTTED TO ACCEPT PRECAST CONC. BAFFLE THEN PRECAST CONC. SHALL BE HELD IN PLACE BY (2) 3"x3"x3/8" ANGLE (4FT. LONG) ATTACHED TO VAULT WALL WITH (4 EA) 1/2" BOLTS AND NUTS (WITH WASHERS) SPACED 14" O.C. ANGLE AND FASTENERS SHALL BE STAINLESS STEEL.
4. PRECAST VAULT AND BAFFLE SHALL HAVE KNOCKOUTS AT ALL PIPE OPENINGS. IF KNOCKOUTS ARE NOT PRESENT THEN PIPE OPENINGS SHALL BE 2" LARGER THAN PIPE DIAMETER.
5. POSITION PIPE RISERS BELOW ACCESS OPENINGS TO ALLOW CLEAR ACCESS TO RISER AND VAULT CHAMBER FOR SAMPLING AND INSPECTION.
6. TOP OF INLET PIPE SHALL BE ONE PIPE DIAMETER HIGHER THAN THE TOP OF THE DISCHARGE PIPE.
7. INLET INSPECTION TEE/RISER MUST EXTEND A MINIMUM OF 12" BELOW THE DESIGNED WATER LEVEL.
8. ALL INTERNAL PIPING (RISER/INSPECTION TEE) SHALL BE A MINIMUM OF 6" PVC PIPE. EACH RISER SHALL BE CONNECTED TO THE WALL OF THE VAULT IN TWO (2) PLACES USING STAINLESS STEEL OR ALUMINUM STRAPS.
9. ALL FITTINGS SHALL BE DESIGNED TOR GREASE RETENTION.
10. CONNECTIONS THROUGH CONCRETE WALLS REQUIRE WATER TIGHT MANHOLE ADAPTERS. SEAL ALL PIPE CONNECTIONS WITH MATERIALS APPROVED BY CVWD.
11. VAULT AND FITTINGS SHALL BE WATERTIGHT.
12. LIDS, FRAMES AND BOLTS SHALL MEET DISTRICT STANDARDS. MANHOLE ACCESS REQUIRED TO ALL VAULT CHAMBERS.
13. FILL WITH CLEAN WATER PRIOR TO STARTUP OF SYSTEM.
14. DISCHARGE MUST COMPLY WITH DISTRICT STANDARDS.
15. INTERCEPTORS SHALL BE VENTED PER UNIFORM PLUMBING CODE.
16. LIQUID DEPTH SHALL MEET THE UNIFORM PLUMBING CODE.
17. DISCHARGE AND TRANSITION TEES/RISERS SHALL EXTEND TO WITHIN 12-18" OF VAULT BOTTOM.

CROSS VALLEY WATER DISTRICT
SIDE SEWER DETAILS

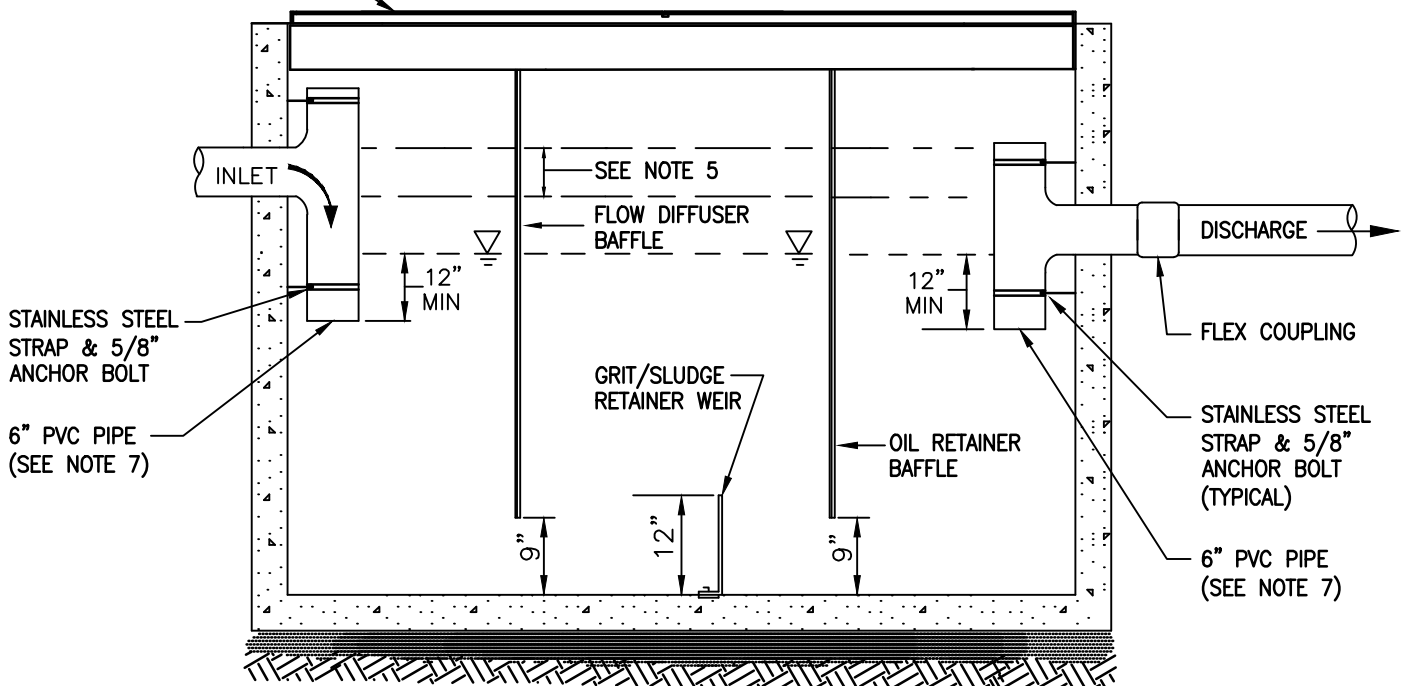
GREASE INTERCEPTOR

SS-4

NOT TO SCALE

FEB 2022

SEE SHEET SS-5A
FOR LID DETAILS



NOTES:

1. GRAY-WATER ONLY. BLACK-WATER SHALL BE CARRIED BY SEPARATE SIDE SEWER.
2. LOCATE INTERCEPTOR WITHIN CLOSE PROXIMITY OF DRIVE FOR ACCESS BY A MAINTENANCE VEHICLE.
3. PRECAST VAULT AND BAFFLE SHALL HAVE KNOCKOUTS AT ALL PIPE OPENINGS. IF KNOCKOUTS ARE NOT PRESENT THEN PIPE OPENINGS SHALL BE LARGER THAN THE PIPE DIAMETER.
4. POSITION PIPE RISERS/INSPECTION TEES BELOW ACCESS OPENINGS TO ALLOW CLEAR ACCESS TO RISER AND VAULT CHAMBER FOR SAMPLING AND INSPECTION.
5. TOP OF INLET PIPE SHALL BE ONE PIPE DIAMETER HIGHER THAN THE TOP OF THE DISCHARGE PIPE.
6. INLET AND DISCHARGE INSPECTION TEE/RISER MUST EXTEND A MINIMUM OF 12" BELOW THE DESIGNED WATER LEVEL.
7. ALL INTERNAL PIPING (RISER/INSPECTION TEE) SHALL BE A MINIMUM OF 6" PVC PIPE. EACH RISER SHALL BE CONNECTED TO THE WALL OF THE VAULT IN TWO (2) PLACES USING STAINLESS STEEL OR ALUMINUM STRAPS.
8. ALL FITTINGS SHALL BE DESIGNED TOR OIL RETENTION.
9. CONNECTIONS THROUGH CONCRETE WALLS REQUIRE WATER TIGHT MANHOLE ADAPTERS. SEAL ALL PIPE CONNECTIONS WITH WATERTIGHT GROUT (MATERIALS TO BE APPROVED BY CVWD).
10. VAULT AND FITTINGS SHALL BE WATERTIGHT.
11. LIDS, FRAMES AND BOLTS SHALL MEET DISTRICT STANDARDS FOR MANHOLE LIDS AND/OR CLEANOUTS AS APPLICABLE.
12. FILL WITH CLEAN WATER PRIOR TO STARTUP OF SYSTEM.
13. DISCHARGE MUST COMPLY WITH DISTRICT STANDARDS.
14. INTERCEPTORS SHALL BE VENTED PER UNIFORM PLUMBING CODE.
15. LIQUID DEPTH SHALL MEET THE UNIFORM PLUMBING CODE.

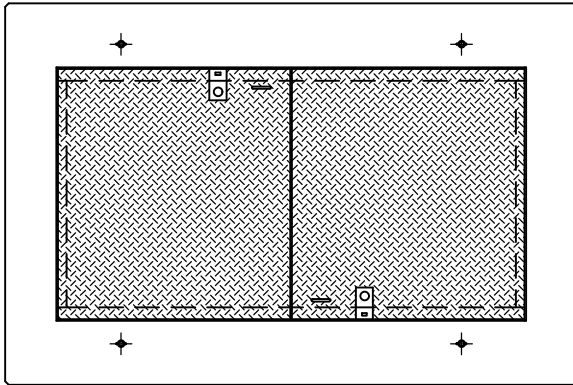
**CROSS VALLEY WATER DISTRICT
SIDE SEWER DETAILS**

OIL/WATER SEPARATOR

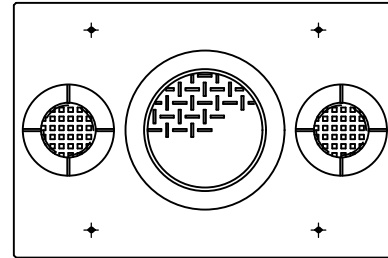
SS-5

NOT TO SCALE

FEB 2022



REQUIRED



ALTERNATE (DISTRICT APPROVAL REQUIRED)

NOTES:

1. COVERS TO HAVE SPRING ASSISTED AND FULL 180° OPENING DOORS, LOCKING LATCH & HOT DIPPED GALVANIZED DIAMOND PLATING. USE LW PRODUCTS HD ACCESS HATCH (H-20) RATED COVER OR EQUAL.
2. LID MUST BE RATED FOR LOAD REQUIREMENTS AND BE WATER TIGHT.

**CROSS VALLEY WATER DISTRICT
SIDE SEWER DETAILS**

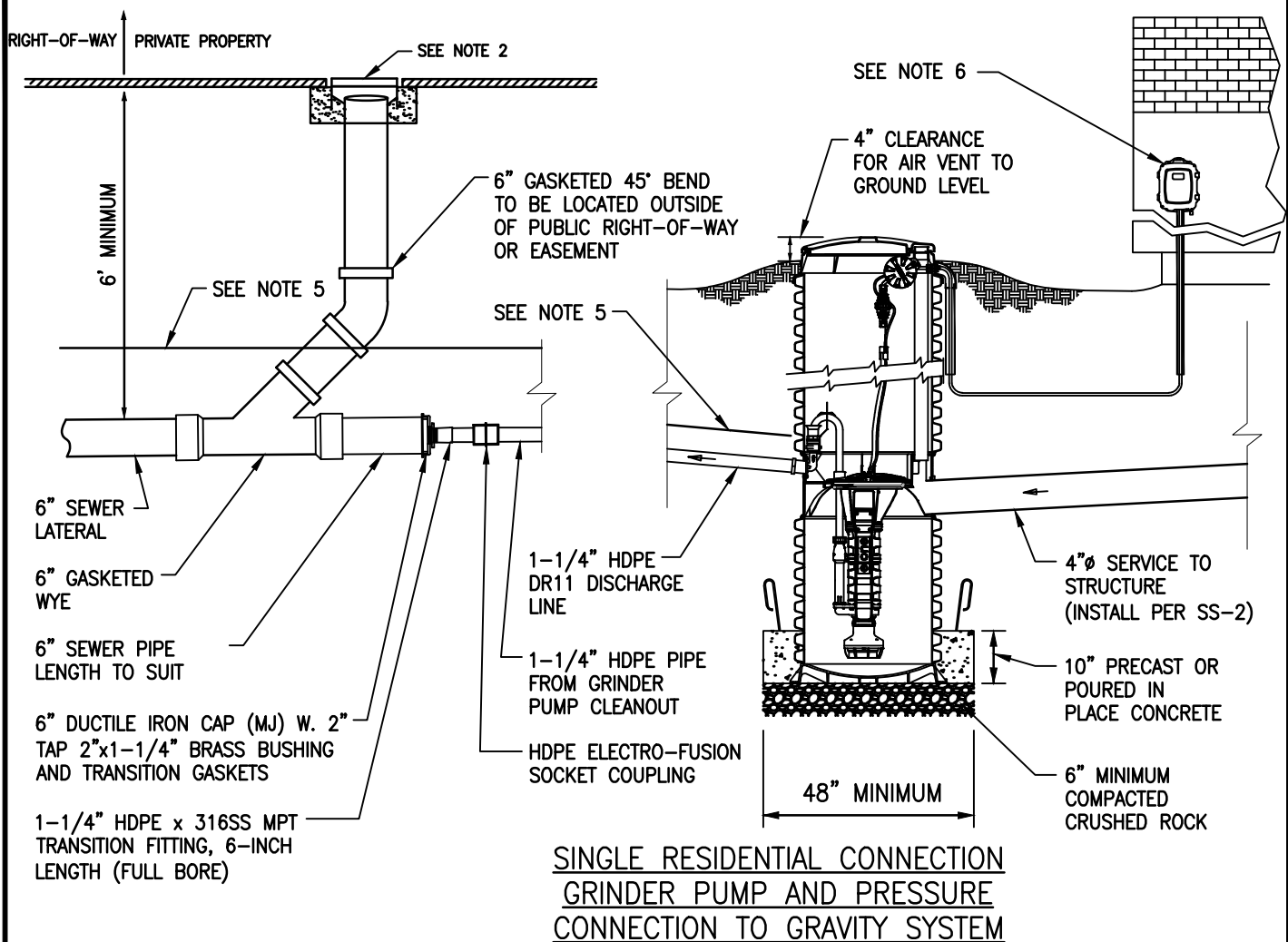
**OIL/WATER SEPARATOR COVER
OPTION DETAILS**

SS-5A

NOT TO SCALE

FEB 2022

FILE NAME: \\K-FS1\LIBRARY\CAD\DETAILS\DISTRICTS\CROSS VALLEY WATER DISTRICT\SS-6.DWG



NOTES:

1. FOR SINGLE RESIDENTIAL/UNIT CONNECTION. ANY DEVIATION MUST BE REVIEWED AND APPROVED BY THE DISTRICT PRIOR TO INSTALLATION. ALL PIPE AND FITTINGS MUST BE INSTALLED PER DISTRICT STANDARDS.
2. 6" LAMP HOLE/CLEANOUT IS REQUIRED FOR VISUAL INSPECTION OF THE PUMP LINE FLOW AND TO AID IN CLEANING OF THE SEWER SYSTEM. THE LAMP HOLE/CLEANOUT MUST BE INSTALLED PER STANDARD SS-1 PRIOR TO TESTING OF THE PUMP SYSTEM AND PERMIT SIGN-OFF. THE LAMP HOLE/CLEANOUT TO HAVE A LOCKING RING COVER.
3. FLEXIBLE COUPLINGS ARE NOT ALLOWED ON THE CONNECTION OF THIS SYSTEM.
4. ALL HDPE PIPE AND FITTINGS SHALL BE DR11 WITH ELECTRO-FUSION WELDED SOCKET JOINTS. HDPE PIPE SHALL BE WATER TESTED TO 80 PSI FOR 5 MINS.
5. INSTALL BURIED METALLIC MARKER TAPE 1' ABOVE PRESSURE LINE. TAPE SHOULD READ "CAUTION BURIED SEWER BELOW". (CARLTON IND., BLACKBURN MFG CO. OR EQUAL.)
6. ALARM PANEL & ELECTRICAL INSPECTED BY OTHERS.
7. INSTALL E-ONE TANK ASSEMBLY AND SENTRY PANEL PER MANUFACTURERS INSTALLATION MANUAL AND FOLLOW REQUIREMENTS FOR MANUFACTURER'S WARRANTY.(DH071 OR DR071 MODELS APPROVED ONLY)

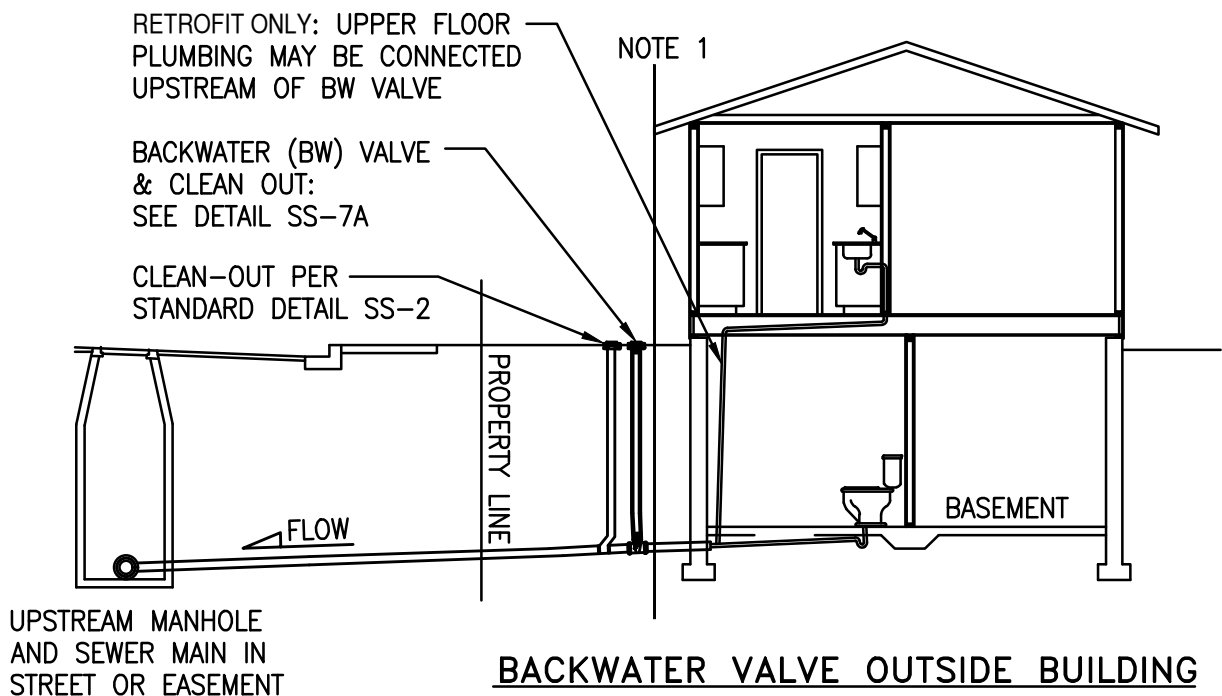
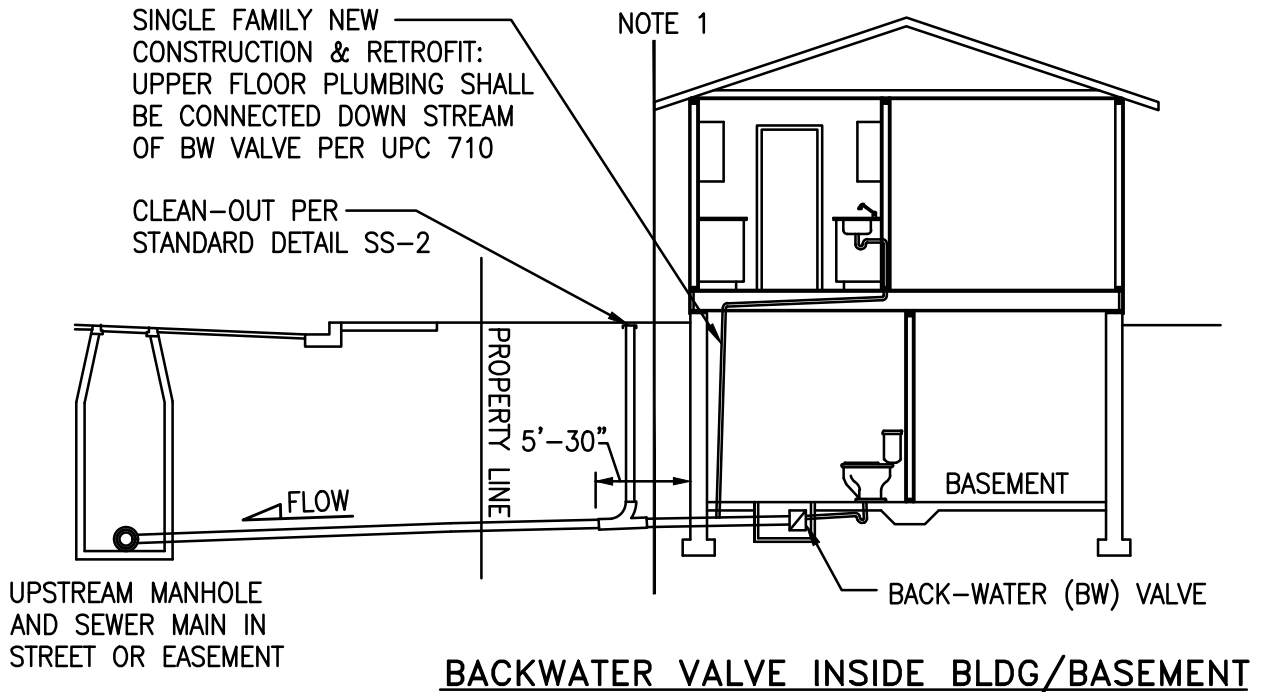
CROSS VALLEY WATER DISTRICT
SIDE SEWER DETAILS

SINGLE RESIDENTIAL
CONNECTION GRINDER PUMP

SS-6

NOT TO SCALE

FEB 2022



NOTES:

1. PLUMBING INSPECTIONS INSIDE THE BUILDING ARE THE RESPONSIBILITY OF THE COUNTY OR CITY IN ACCORDANCE WITH THE UNIFORM PLUMBING CODE.

**CROSS VALLEY WATER DISTRICT
SIDE SEWER DETAILS**

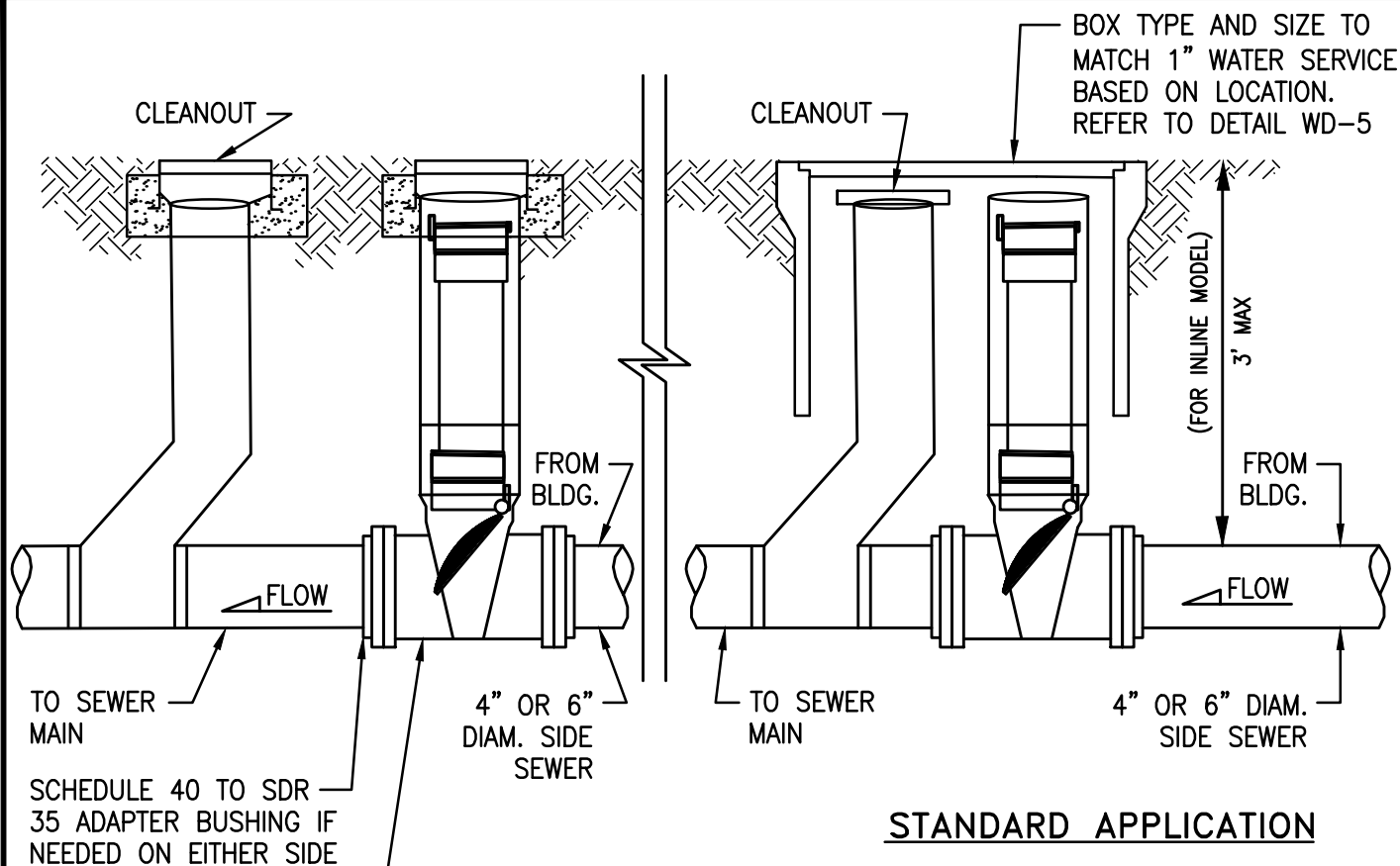
**PRIVATE BACKWATER VALVE
INSTALLATION TO SANITARY SEWER**

SS-7

NOT TO SCALE

FEB 2022

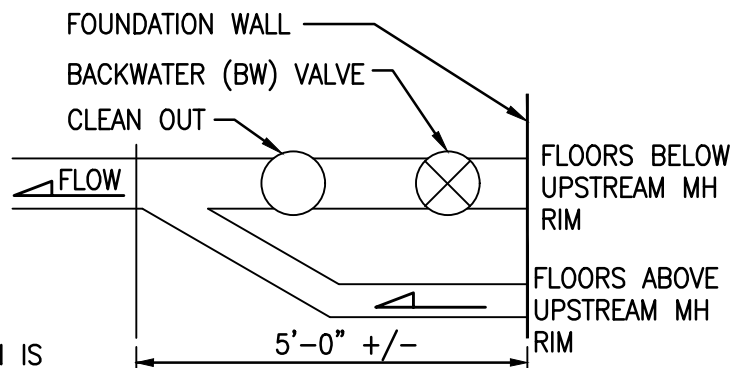
FILE NAME: \\K-FS1\LIBRARY\CAD\DETAILS\DISTRICTS\CROSS VALLEY WATER DISTRICT\SS-7A.DWG



TRAFFIC APPLICATION

NOTES:

1. TO BE INSTALLED WHEN FINISH FLOOR ELEVATION IS LOWER THAN THE UPSTREAM MANHOLE RIM ELEVATION. IN ACCORDANCE WITH UPC 710.0.
- A. ALL ACCESS LIDS SHALL BE BROUGHT TO FINISH GRADE. PROPERTY/BUILDING OWNER SHALL TAKE OWNERSHIP AND RESPONSIBILITY FOR CLEANING AND MAINTAINING.
- B. IF PLACED IN CONCRETE, ASPHALT, OR TRAFFIC AREAS; A TRAFFIC BEARING LOCKING CASTING AND LID MARKED "SEWER" IS REQUIRED BY THE DISTRICT.
- C. PLASTIC BOXES MARKED "SEWER" ARE ACCEPTABLE IN LANDSCAPE AREAS.
- D. A SEPARATE BOX MAY BE USED FOR THE CLEANOUT BASED ON FIELD LOCATIONS.
- E. BACKWATER VALVE SIZE TO MATCH PLUMBING SIZE.



BACKWATER VALVE OUTSIDE PLAN VIEW

**CROSS VALLEY WATER DISTRICT
SIDE SEWER DETAILS**

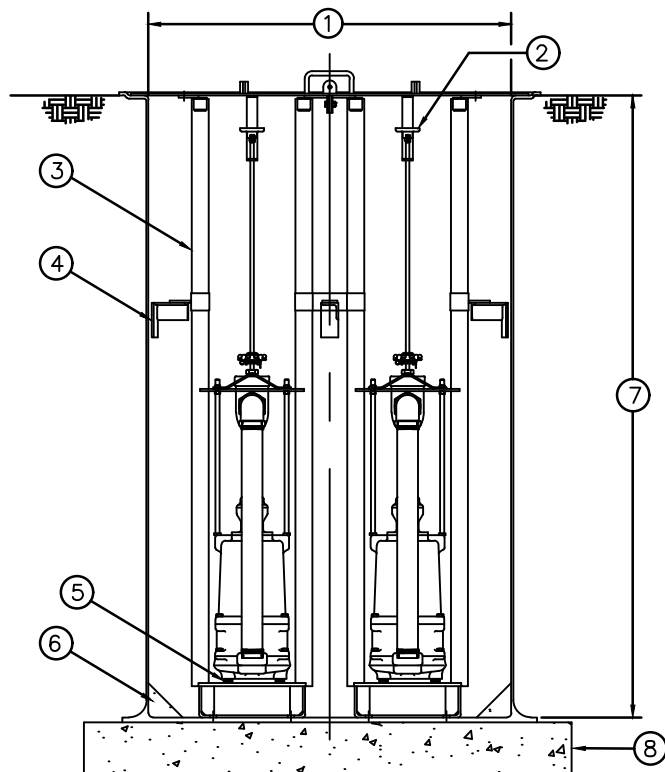
PRIVATE BACKWATER VALVE
ASSEMBLY OUTSIDE INSTALLATION

SS-7A

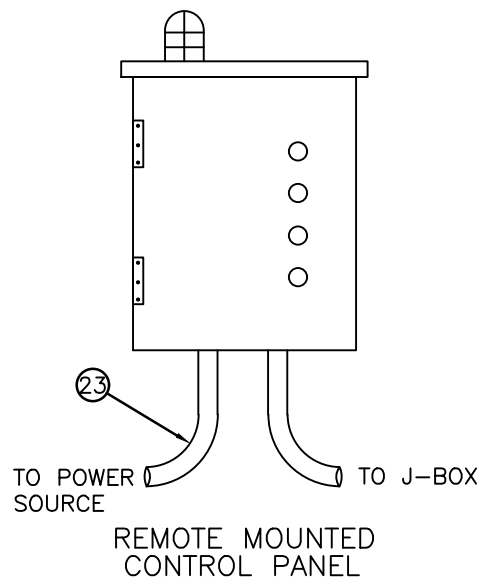
NOT TO SCALE

FEB 2022

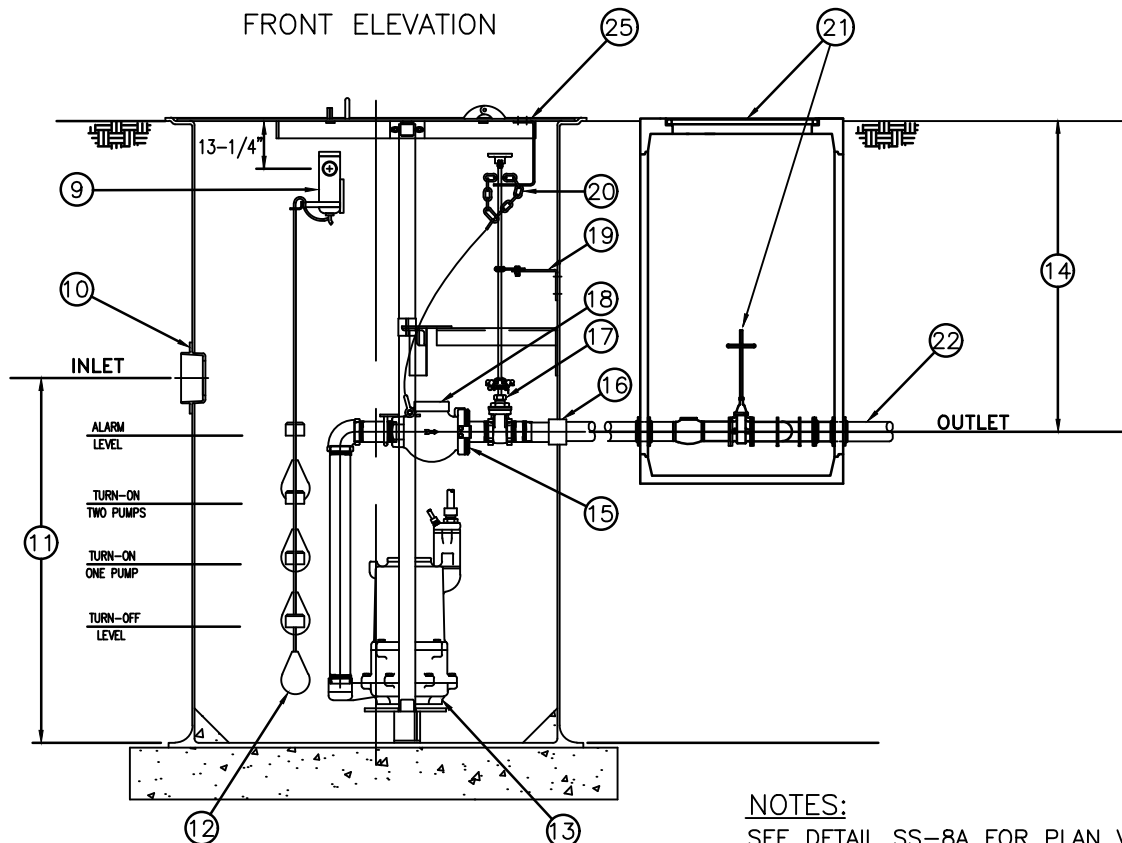
FILE NAME: \\K-FSI\LIBRARY\CAD\DETAILS\DISTRICTS\CROSS VALLEY WATER DISTRICT\SS-8.DWG



FRONT ELEVATION



NOTE: ELECTRICAL SCHEMATIC SHALL BE PER MANUFACTURERS' RECOMMENDATION BASED ON PUMP MODEL AND POWER SOURCE.



SIDE ELEVATION

NOTES:
SEE DETAIL SS-8A FOR PLAN VIEW,
MATERIALS LIST AND GENERAL NOTES.

CROSS VALLEY WATER DISTRICT SIDE SEWER DETAILS

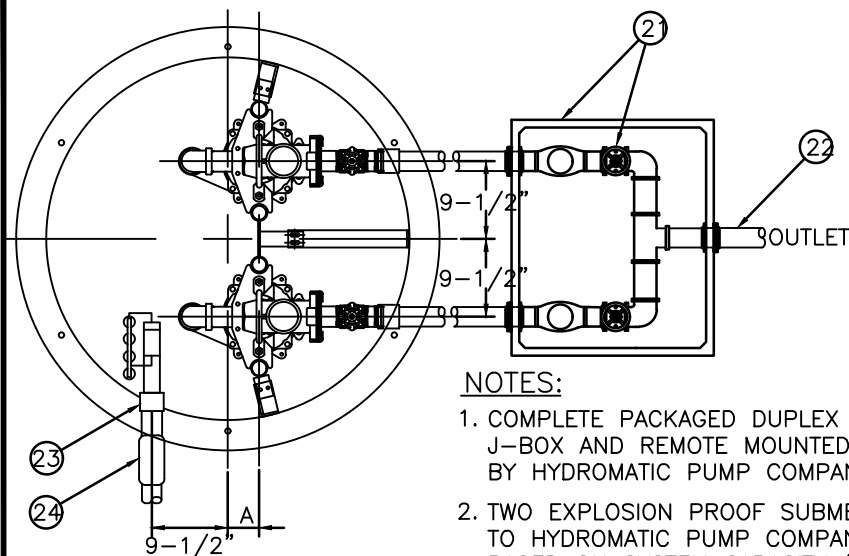
PRIVATE COMMERCIAL DUPLEX
GRINDER PUMP STATION

SS-8

NOT TO SCALE

FEB 2022

FILE NAME: \\K-FS1\LIBRARY\CAD\DETAILS\DISTRICTS\CROSS VALLEY WATER DISTRICT\SS-8A.DWG



TANK DIA.	"A"
48"	1"
60"	8"
72"	8"

NOTES:

1. COMPLETE PACKAGED DUPLEX SEWAGE GRINDER LIFT STATION WITH J-BOX AND REMOTE MOUNTED CONTROL PANEL AS MANUFACTURED BY HYDROMATIC PUMP COMPANY OR EQUAL.
2. TWO EXPLOSION PROOF SUBMERSIBLE SEWAGE GRINDER PUMPS EQUAL TO HYDROMATIC PUMP COMPANY OR EQUAL. PUMPS WILL BE SIZED BASED ON SYSTEM CAPACITY (GPM REQUIRED), TOTAL DYNAMIC HEAD (TDH) AND TYPE OF COMMERCIAL USE. DEVELOPER SHALL SUBMIT PUMP MODEL AND FLOW REQUIREMENTS TO CROSS VALLEY WATER DISTRICT FOR APPROVAL. SEE NOTE 6.
3. SUMP BASIN DIAMETER SHALL BE SIZED TO MEET SYSTEM CAPACITY. THE WET WELL SHOULD PROVIDE A HOLDING PERIOD NOT TO EXCEED 10 MINUTES FOR THE DESIGN AVERAGE FLOW. SEE NOTES 2 AND 6.
4. CONTROL PANEL SHALL BE CONTAINED IN A WEATHERPROOF, STEEL ENCLOSURE MEETING NEMA 3R REQUIREMENTS WITH HINGED DOOR AND NEOPRENE GASKET. CONTROL PANEL SHALL INCLUDE ALARM LIGHT, RUN LIGHT, HAND-OFF-AUTO SWITCH, TRANSFORMER RESET AND OVERLOAD RESET. THE CONTROL PANEL SHALL BE ASSEMBLED AND TESTED BY A SHOP MEETING U.L. STANDARD 508 FOR INDUSTRIAL CONTROLS. ELECTRICAL INSTALLATION SHALL BE IN ACCORDANCE WITH ALL LOCAL CODES.
5. DEVELOPER IS RESPONSIBLE FOR OBTAINING ELECTRICAL PERMITS AND APPROVALS PRIOR TO CONSTRUCTION.
6. PROVIDE SHOP DRAWING SUBMITTALS FOR ALL MATERIALS AND SYSTEM SIZING CALCULATIONS TO CROSS VALLEY WATER DISTRICT FOR REVIEW AND APPROVAL PRIOR TO CONSTRUCTION.

PLAN VIEW

MATERIALS LIST

① CONCRETE OR FIBERGLASS SUMP. SEE NOTES 3 AND 6.	⑮ HYDRAULICALLY SEALED DISCHARGE FLANGE.
② GATE VALVE EXTENSION REQUIRED FOR DISTANCE GREATER THAN 2' FROM TOP OF BASIN.	⑯ 2" NPT COUPLING.
③ GALVANIZED PIPE GUIDE RAIL.	⑰ 2" BRASS GATE VALVE.
④ INSTALL BRACE WHEN GUIDE RAIL EXCEEDS 15'-0".	⑱ 2" CAST IRON BALL CHECK VALVE.
⑤ SHIMS FOR DISCHARGE FLANGE ALIGNMENT.	⑲ INTERMEDIATE BRACE REQUIRED FOR EXTENSION LONGER THAN 10'-0".
⑥ HOPPER BOTTOM BY OTHERS.	⑳ LIFTING CHAIN.
⑦ 4' MIN. AND 16' MAX. DEPTH. SEE NOTE 3.	㉑ DISCHARGE PIPING SHALL INCLUDE 2" CHECK VALVE (2 EACH), 2" GATE VALVE (2 EACH), G.I. TEE, BENDS, UNIONS AND ALL MISC. FITTINGS REQUIRED. CONCRETE VAULT SHALL BE UTILITY VAULT MODEL 444-LA OR EQUAL, WITH DRAIN AND 3' X 3' APPROVED HS20 WATERTIGHT HATCH.
⑧ 12" MINIMUM DEPTH FOUNDATION GRAVEL.	㉒ 2-1/2" PVC PIPE. MAINTAIN 36" MINIMUM COVER.
⑨ NEMA 4 J-BOX	㉓ 1-1/4" NPT CONDUIT TO POWER SUPPLY.
⑩ 6" INLET HUB OR COLLAR.	㉔ CONDUIT SEAL TO MEET LOCAL CODES AND PREVENT SURFACE WATER FROM ENTERING J-BOX.
⑪ 6" INLET PIPE DEPTH PER FIELD CONDITIONS.	㉕ APPROVED HS20 WATERTIGHT HATCH.
⑫ SEALED MERCURY OR MECHANICAL SWITCH.	
⑬ SUBMERSIBLE SEWAGE GRINDER PUMP. SEE NOTE 2.	
⑭ 3'-0" STANDARD DEPTH.	

**CROSS VALLEY WATER DISTRICT
SIDE SEWER DETAILS**

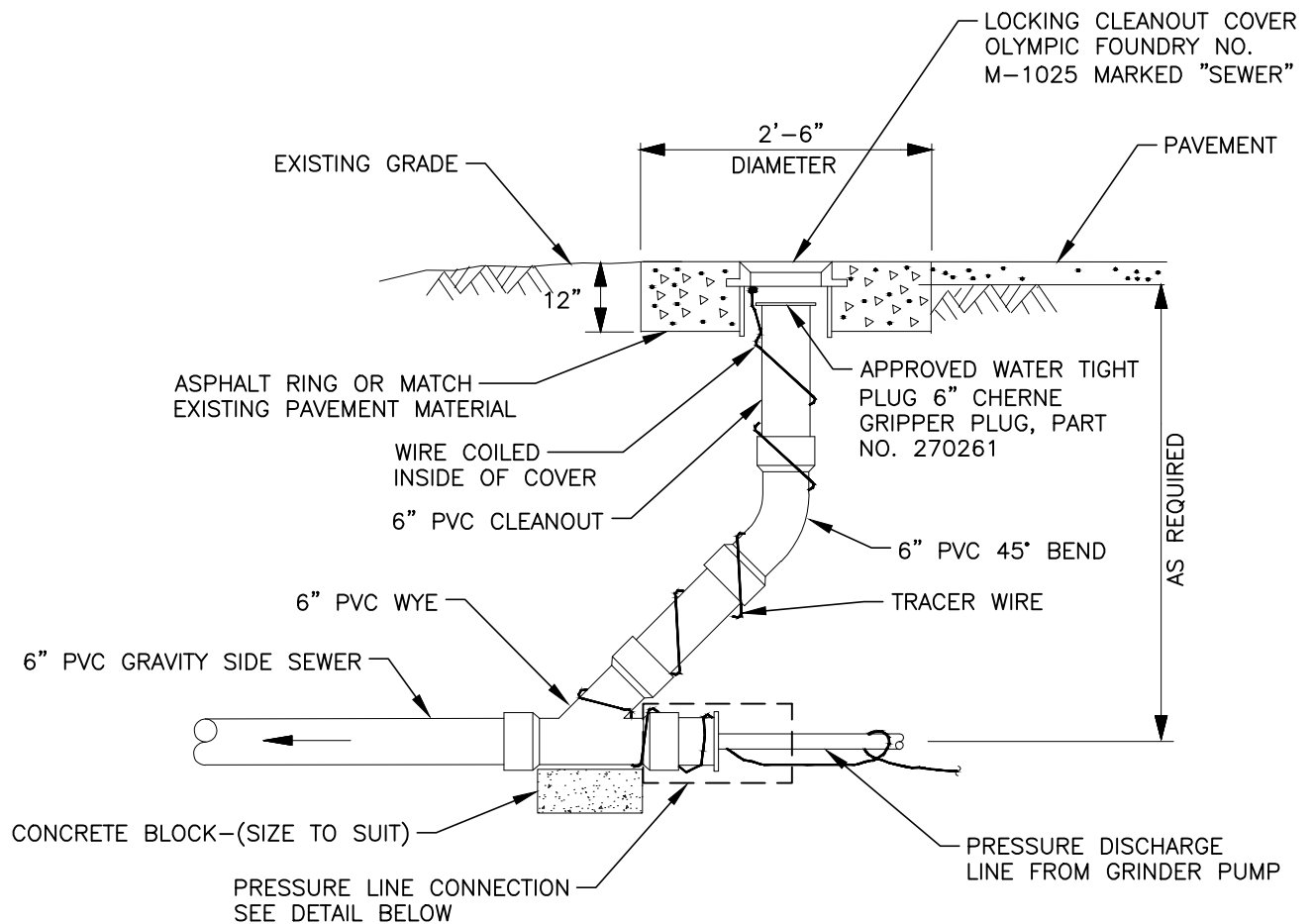
**PRIVATE COMMERCIAL DUPLEX
GRINDER PUMP STATION**

SS-8A

NOT TO SCALE

FEB 2022

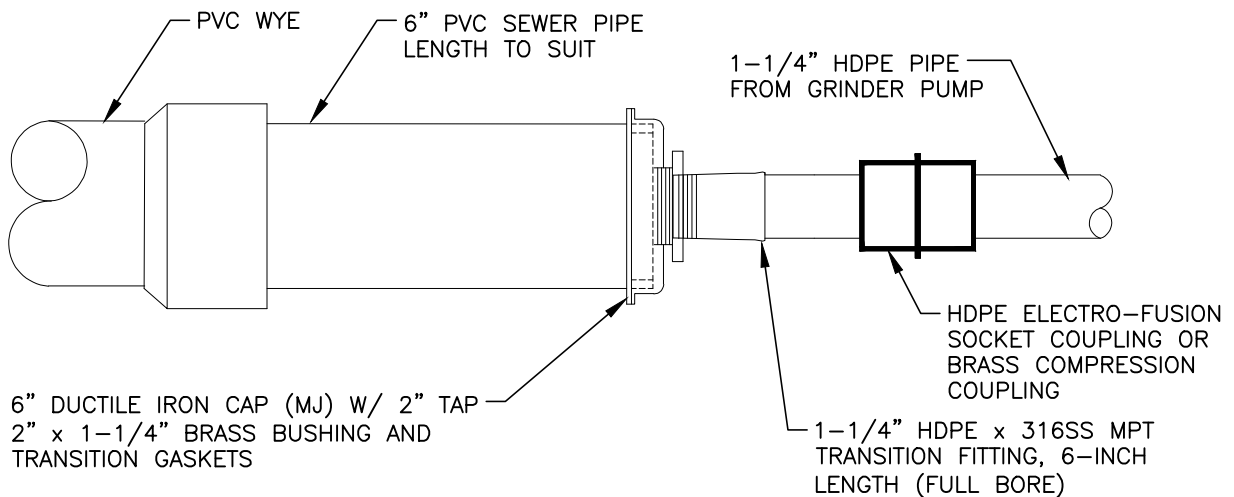
FILE NAME: \\K-FS1\LIBRARY\CAD\DETAILS\DISTRICTS\CROSS VALLEY WATER DISTRICT\SS-9.DWG



NOTES:

1. ALL PVC FITTINGS SHALL BE GASKETED
2. NO COLLECTION VALVE BOX REQUIRED WHEN CONNECTING TO A GRAVITY SIDE SEWER

CONNECTION TO GRAVITY SEWER DETAIL



**CROSS VALLEY WATER DISTRICT
SIDE SEWER DETAILS**

**PRIVATE PRESSURE LINE
CONNECTION TO GRAVITY SEWER**

SS-9

NOT TO SCALE

FEB 2022