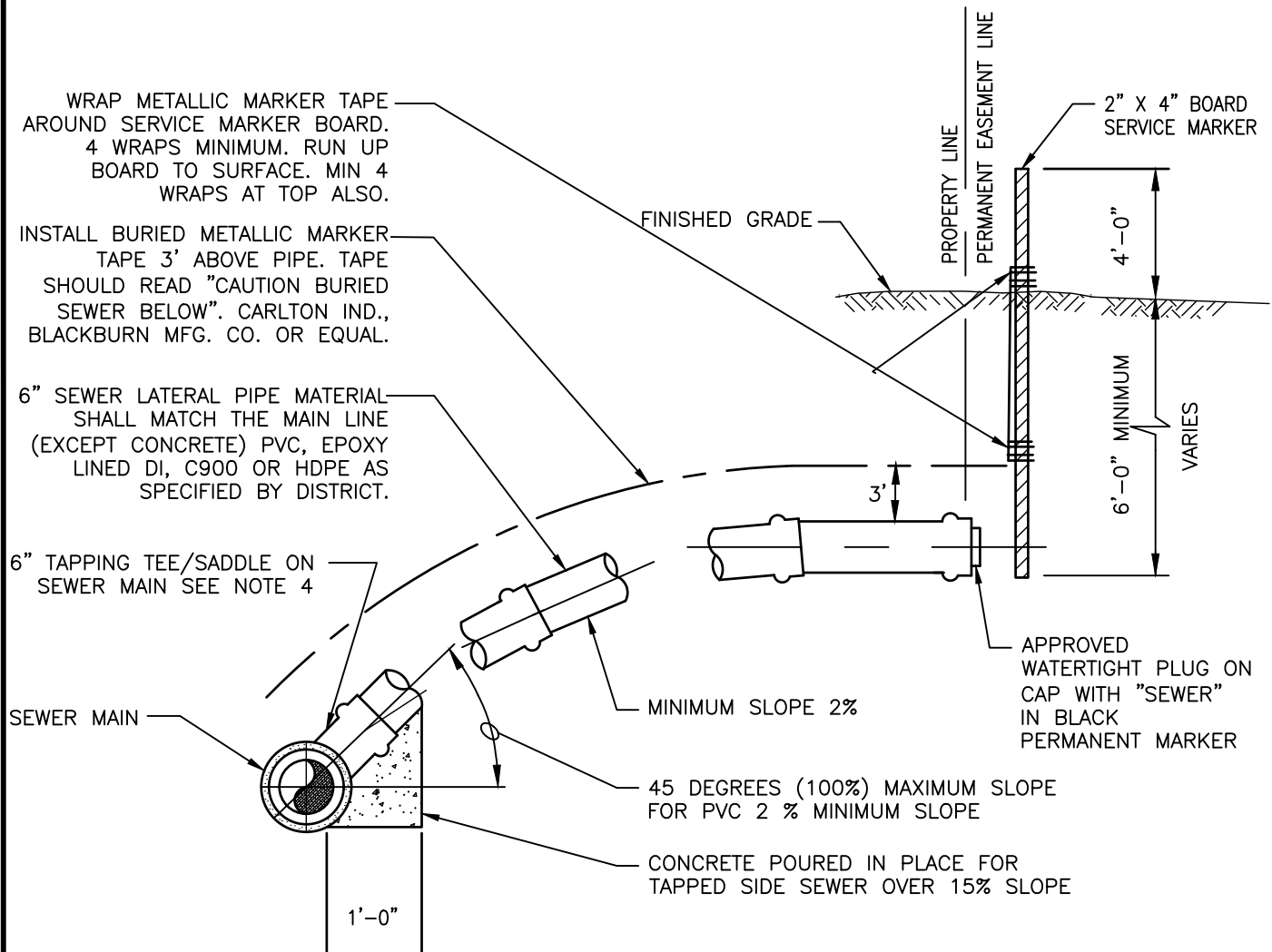


FILE NAME: L:\CAD\DETAILS\DISTRICTS\CROSS VALLEY WATER DISTRICT\SD-8A.DWG



NOTES:

1. 2" X 4" BOARD – LENGTH AS REQUIRED IN EVEN FOOT INCREMENTS. PAINT TOP 5' WITH WHITE PAINT. STENCIL IN BLOCK LETTERS THE WORD "SEWER" & TOTAL LENGTH OF THE 2" X 4" BOARD. LETTERING TO BE 3" IN HEIGHT. TOP OF 2" X 4" SHALL BE 4' ABOVE GROUND LEVEL.
2. CONTRACTOR TO PROVIDE ALL MATERIALS, TRAFFIC CONTROL, PERMITS, FLAGGING, SHORING AND MISCELLANEOUS WORK TO TAP THE MAIN AND INSTALL THE SIDE SERVICE.
3. FOR DUCTILE IRON PIPE IN RIGHT- OF-WAY & EASEMENTS, USE RESTRAINING DEVICE AS SPECIFIED BY THE DISTRICT.
4. FOR TAPS ON:  
DI USE SST ROMAC, SMITH BLAIR, OR FORD TAPPING TEE. PVC OR CONCRETE, USE ROMAC CB TEE W/SST CLAMP, HDPE CONSULT THE DISTRICT.
5. PROVIDE DISTANCE IN FEET FROM TEE/SADDLE TO DOWNSTREAM MANHOLE TO THE DISTRICT.

**CROSS VALLEY WATER DISTRICT  
STANDARD SEWER DETAILS**

**SEWER LATERAL EXISTING MAINS**

SD-8A

NOT TO SCALE

FEB 2022