

| NO. | ITEM | MATERIAL | SIZE | MANUFACTURER NO. | USE |
|-----|------------------|----------|-----------------------------|------------------|---|
| 1. | VALVE BOX BOTTOM | C.I. | 30" | EJ85556030U | ALL AREAS |
| 2. | VALVE BOX TOP | C.I. | 16" | EJ85557016U | NOT IN ADA AREA |
| 3. | VALVE BOX COVER | C.I. | LOGO LID CROSS VALLEY | EJ06800221 | ADA AREA COVER (FOR PRIVATE LIDS USE EJIW 6800) |

MATCH EXISTING PAVEMENT THICKNESS OR 3" MIN. DEPTH, 1/2" HMA ASPHALT PATCH SEE DETAIL TBR-2.

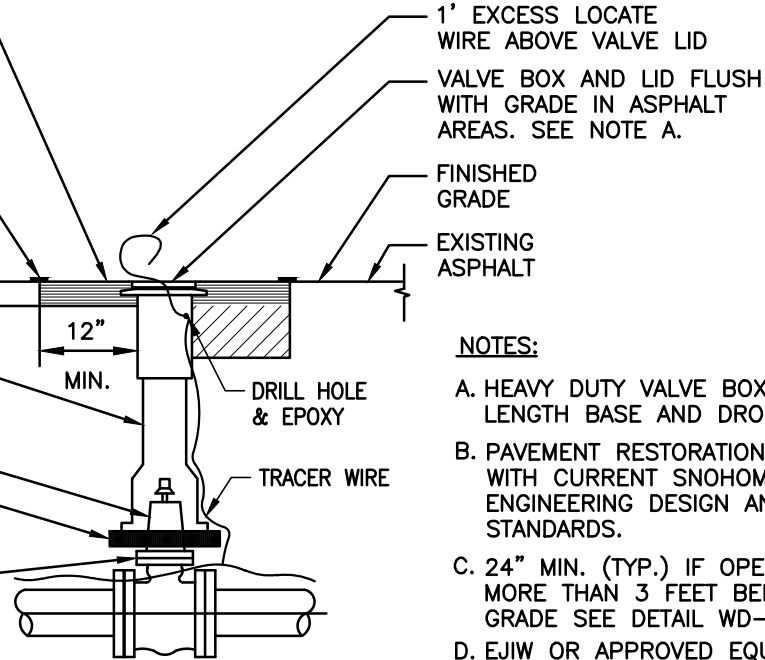
CLEAN AND TACK EDGES WITH SEALER CSS1 AND SEAL JOINTS WITH HOT ASPHALT CEMENT (AR4000W). SAND AFTER SEALANT IS APPLIED.

VALVE BOX CENTERED OVER OPERATING NUT

VALVE

SET VALVE BOX ON ETHAFOAM 2" THICK (TYP)

VALVE SHOWN IS GATE VALVE. USE SAME INSTALLATION FOR BUTTERFLY VALVE



NOTES:

- HEAVY DUTY VALVE BOX WITH MIN. 30" LENGTH BASE AND DROP HANDLE COVER.
- PAVEMENT RESTORATION IN ACCORDANCE WITH CURRENT SNOHOMISH COUNTY ENGINEERING DESIGN AND DEVELOPMENT STANDARDS.
- 24" MIN. (TYP.) IF OPERATING NUT IS MORE THAN 3 FEET BELOW FINISHED GRADE SEE DETAIL WD-11D.
- EJIW OR APPROVED EQUAL, MANUFACTURED IN THE U.S.A.

1' EXCESS LOCATE WIRE ABOVE VALVE LID

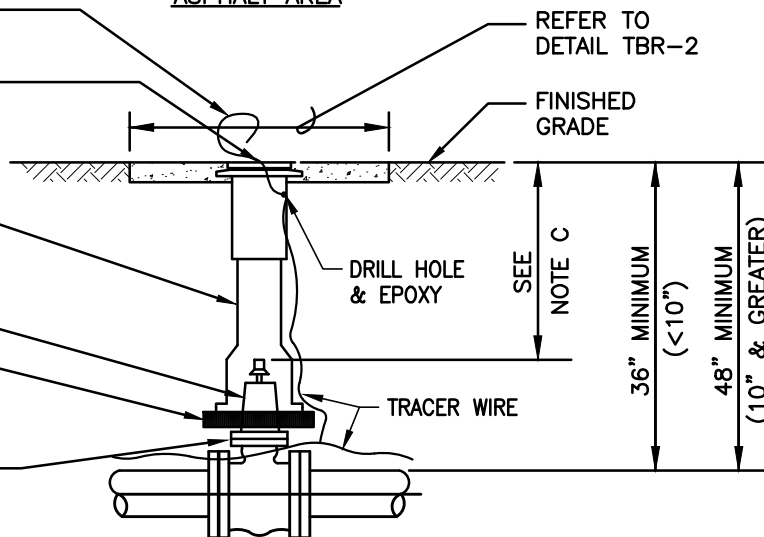
VALVE BOX AND LID (ALIGN LID WITH PIPE DIRECTION)

VALVE BOX CENTERED OVER OPERATING NUT

VALVE

SET VALVE BOX ON ETHAFOAM 2" THICK (TYP)

VALVE SHOWN IS GATE VALVE. USE SAME INSTALLATION FOR BUTTERFLY VALVE



VALVE BOX IN UNIMPROVED AREA

CSS1= CATIONIC SLOW SETTING TYPE 1
AR4000W= ASPHALT RUBBER TYPE 4000W
HMA = HOT MIX ASPHALT

CROSS VALLEY WATER DISTRICT STANDARD WATER DETAILS

CAST IRON VALVE AND BOX

WD-11

NOT TO SCALE

JULY 2024