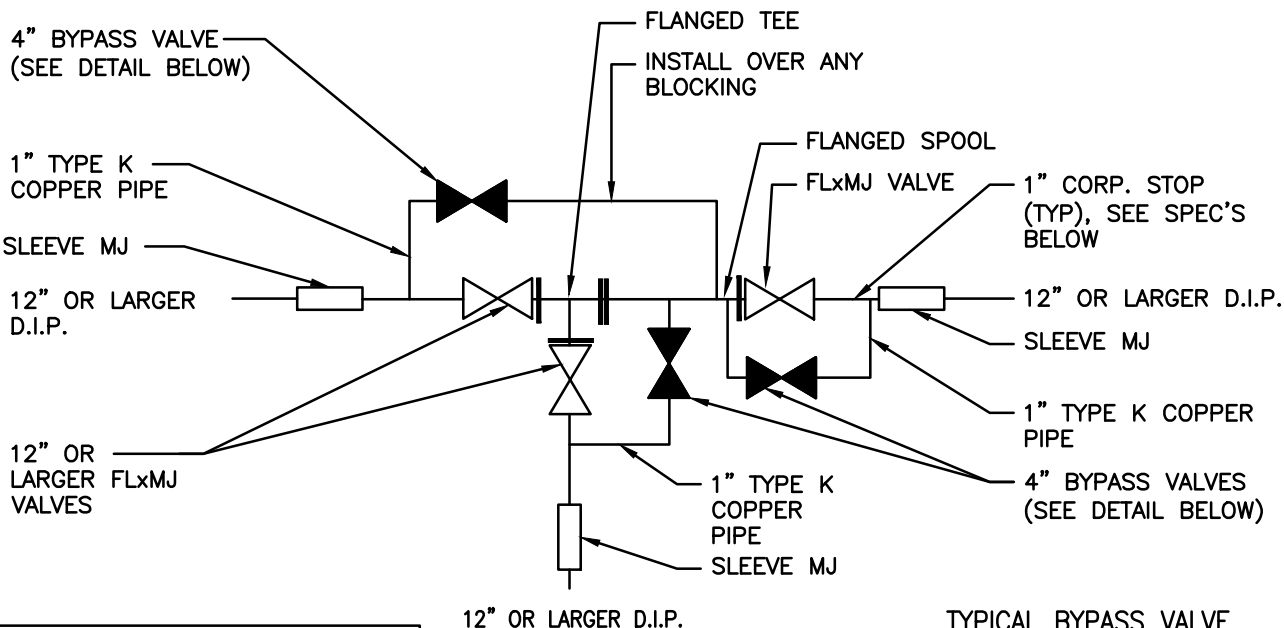


FILE NAME: L:\CAD\DETAILS\DISTRICTS\CROSS VALLEY WATER DISTRICT\WD-11B.DWG



NOTE: BYPASS VALVE SHALL BE USED WHEN STATIC WATER PRESSURE EXCEEDS 150 P.S.I. ON WATER MAINS 12" AND LARGER, AS DIRECTED BY THE DISTRICT.

TYPICAL BYPASS VALVE PLACEMENT

HEAVY DUTY CAST-IRON VALVE BOX (SEE WD-11)

SET VALVE BOX ON ETHAFOAM 2" THICK (TYP)

PREBENT 3/4" RE-BAR TAR COATED PLACE NEAR END OF NIPPLE

1" STRAIGHT COPPER TO OUTSIDE I.P. THREAD MUELLER H-15428 OR EQUAL.

1" TYPE K COPPER PIPE

3'x1-1/2"x1" POURED CONCRETE

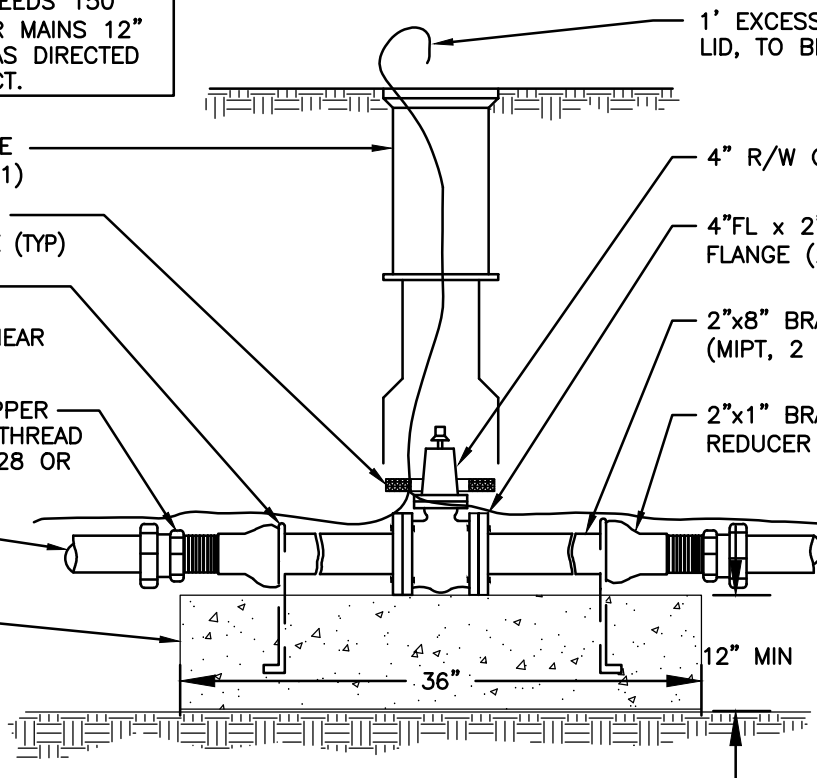
1' EXCESS LOCATE WIRE ABOVE LID, TO BE ROLLED UP NEATLY

4" R/W GATE VALVE (FLxFL)

4"FL x 2" FIPT COMPANION FLANGE (2 EACH)

2"x8" BRASS NIPPLE (MIPT, 2 REQ'D.)

2"x1" BRASS BELL REDUCER (2 REQ'D.)



1" CORPORATION STOP*

FORD	MUELLER
FB-1000-4-Q	B-25008

*CORP STOP INSTALLED WHEN:
 -VALVE IS 12" OR LARGER
 -PRESSURE IS > 150 PSI
 -DIRECTED BY THE DISTRICT

CROSS VALLEY WATER DISTRICT STANDARD WATER DETAILS

4" BYPASS VALVE

WD-11C

NOT TO SCALE

JULY 2023