

Drinking Water Quality Report 2023

What you will find in this report:

- Water Source – Where your water comes from
- Source and types of contaminants
- Test results for the water tested in your area
- Explanation of the results
- Regulated and Unregulated Contaminants

Cross Valley Water District is pleased to provide you with our 2023 Water Quality Report. In this report we will provide you with information about your water source and the results of our water quality testing in 2023.

The District welcomes public interest and participation with decisions regarding our community's drinking water. The Board of Commissioner meetings are held at the District office on the First and Third Tuesday of the month at 2:30pm. Check the website for the upcoming meeting agenda's. If you wish to address the Board contact the General Manger to be added to the agenda.



For More Information on Water Quality Issues:

Cross Valley Water District
8802 180th St. SE, Snohomish, WA, 98296-4804
(360) 668-6766
cvwd@crossvalleywater.net

City of Everett Water Quality Office
(425) 257-8800
everettwa.gov/water

EPA Safe Drinking Water
Hotline (800) 426-4791
www.epa.gov/safewater
Email questions to:
hotline-sdwa@epamail.epa.gov

Washington State Department of Health
Division of Drinking Water
1-800-521-0323
www.doh.wa.gov/ehp/dw

Turbidity, Nitrate, Total Coliform, Bacteria, Fluoride, Bromodichloroacetic Acid, Chloroform, Lead, Copper... What do all these terms mean?

Maximum Contaminant Level (MCLG) - The level of a contaminant in drinking water below which there is no known or expected risk to health. MCLGs allow for a margin of safety.

Maximum Contaminant Level (MCL) - The level of a contaminant allowed in drinking water. MCLs are set as close to the MCLGs as is feasible using the best available treatment technology.

Treatment Technique (TT) - A required process intended to reduce the level of a contaminant in drinking water.

Action Level (AL) - The concentration of a contaminant which, if exceeded, triggers treatment or other requirements that a water system must follow.

Parts per Million (ppm) / Parts per Billion (ppb) - A part per million means that one part of a particular contaminant is present for every million parts of water. Similarly, parts per billion indicate the amount of contaminant per billion parts of water.

Total Coliform Bacteria - Testing is used to monitor microbial quality in the water distribution system.

Fluoride - Is added to the water (Everett Water Supply Only) in carefully controlled levels for dental health. The Fluoride in well water, if any, comes from natural resources.

Nitrate - The small amount of nitrate comes from natural sources in the water shed.

Turbidity - Is a measure of the amount of particulates in water measured in Nephelometric Turbidity Units (NTU).

Particulates in water can include bacteria, viruses and protozoans that can cause disease. Turbidity measurements are used to determine the effectiveness of the treatment process in removing these particulates. 95% of all combined filter effluent samples, must be less than, or equal to 0.3 NTU and no single turbidity sample can be greater than 1.0 NTU.

1 Bromodichloroacetic Acid, Chloral Hydrate, Dichloroacetonitrile, 1,1 Dichloropropanone, 1,1,1 Trichloropropanone, Total Organic Halides - These substances are by-products of the chlorine disinfection process and were monitored quarterly as part of the Information Collection Rule (ICR) requirements.

2 Bromodichloromethane, Chloroform, Dichloroacetic Acid, Trichloroacetic Acid These substances are disinfection by-products which must be monitored quarterly every year to determine compliance with the Disinfectants/Disinfection By-products Rule regulations.

Not Applicable (N/A) - Means that EPA has not established MCLGs for these substances.

Microbial, Turbidity and Inorganics - All parameters are below EPA standards.

Lead & Copper - EPA requires monitoring for the presence of lead and copper. The 90% level is the highest result obtained in 90% of the samples when ranked from lowest to highest findings. This indicates there is virtually no lead or copper in the water you are provided, but your household plumbing may contribute to the presence of lead and copper at your tap.

ND & NR - "ND" means not detected. "NR" means the contaminant was not regulated by EPA.

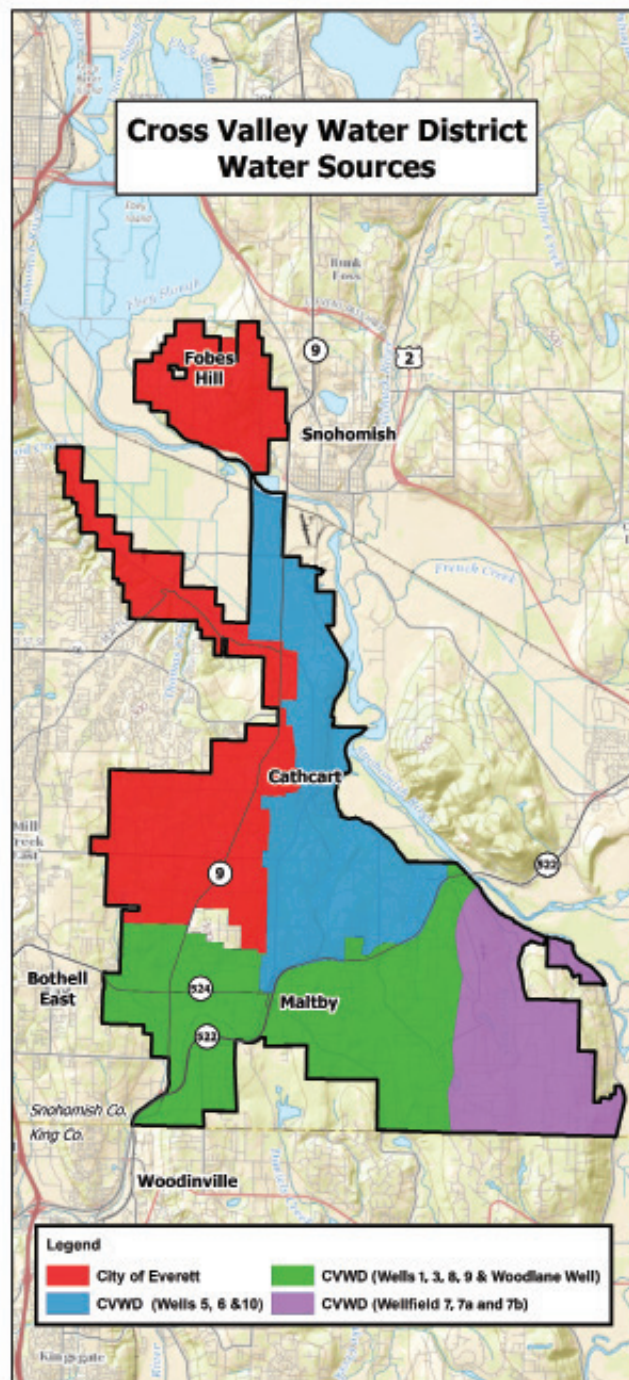
Arsenic - The maximum contaminant level (MCL) for arsenic in drinking water is ten parts per billion (10 ppb). Over the past year, Everett and Cross Valley Water District have routinely monitored the treated drinking water for arsenic. None near the MCL was detected in any of the samples collected.

Treatment Polymers - During water treatment, polymer coagulants are added to improve coagulation and filtration that remove particulates from water. The particulates that are removed can include viruses, bacteria and other disease causing organisms. The USEPA sets limits on the type and amount of polymer that a water system can add to the water. In addition to the EPA limits, the State of Washington also requires that all polymers used be certified safe for potable water use by an independent testing organization (NSF International). During treatment, Everett adds only NSF approved polymers and the levels used are far below the safe limits set by USEPA.

Disinfection By-Products (DBPs) - These are organic compounds resulting from the interaction of chlorine with natural organic matter in water supplies. This applies to locations within the Everett service area and the portion of the Cross Valley Water Service area where the source is wells 5, 6, and 10 which are monitored to determine compliance with current regulations. Both HHA5 and TTHM content of your water have been significantly below the maximum allowed safety levels.

Halo-acetic acids (HAA 5) - A disinfection by-product of the chlorination process that is used to kill or inactivate disease-causing microbes. The EPA standard is 60 ppb.

Trihalomethane (THM) - A disinfection by-product of the chlorination process that is used to kill disease-causing organisms. The EPA standard is 80 ppb.



2023 WATER QUALITY ANALYSIS RESULTS FROM EVERETT AND THE WELLS OF CROSS VALLEY

		Wells 1, 3, 8, 9 & Woodlane					Wells 7, 7a & 7b	Wells 5,6&10	Everett				
		Results	Results	Results	Range	Average	Results	Results	Range	Average	Complies	MCL	Major Source Listed by EPA
REGULATED	Units	Woodlane	3 & 8	1 & 9						Value			
ARSENIC	mg/L	0.001	0.003	0.0047	0.001-0.005	0.003	N/D	0.004	<0.1 - 0.2 ppb	0.1 ppb	Yes	0.01	Erosion of natural deposits: runoff from orchards, runoffs from glass & electronics production waste
ALKALINITY	mg/L	N/D	N/D	N/D	N/D	N/D	N/D	N/D	13.0-23.1 ppm	16.3	Yes		
ALUMINUM	mg/L	N/D	N/D	N/D	N/D	N/D	N/D	N/D	0.006-0.04 ppm	0.02	Yes		
BARIUM	mg/L	0.006	0.004	0.003	0.003-0.006	0.004	0.003	0.004	0.0039-0.0041 ppm	0.0040 ppm	Yes	2	
CHROMIUM	mg/L	0.001	0.001	N/D	N/D-0.001	0.001	N/D	N/D		<0.002 ppm	Yes	0.1	
FLUORIDE	mg/L	N/D	N/D	0.1	N/D-0.1	0.003	N/D	0.14	0.5-0.8 ppm	0.7	Yes	4	CVWD - Naturally occurring, erosion of natural deposits. Everett - Fluoride is added to your water during treatment
NITRATE-N	mg/L	3.57	2.58	0.78	0.78 - 3.57	2.31	0.46	N/D			Yes	10	Erosion of natural deposits and animal wastes
MANGANESE	mg/L	N/D	N/D	0.003	N/D-0.003	0.003	0.002	0.004	<0.0001-0.0006 ppm	0.0004	Yes	0.05	
CHLORIDE	mg/L	6.1	5.1	3.6	3.6-6.1	4.93	2.3	5.1	2.2-2.6 ppm	2.4	Yes	250	
SULFATE	mg/L	13	10	8.9	8.9-13	10.63	8.8	6.2	2.7-3.3 ppm	2.9	Yes	250	
SODIUM	mg/L	6.63	6.74	6.1	6.1-6.74	6.49	4.46	7.94	5.78-6.57 ppm	6.14	Yes		
HARDNESS as Calcium Carbonate	mg/L	100	86.7	68.3	68.3-100	85	56.5	67.8	7.6-13.9	9.6	Yes		
ELECTRICAL CONDUCTIVITY	uS/cm	259	220	173	173-259	217.33	144	178	48-61	54	Yes	700	
TURBIDITY	NTU	N/D	N/D	N/D	N/D	N/D	N/D	N/D	100%	0.04	Yes	1	Soil Erosion
RADIUM	pCi/L	N/D	N/D	N/D	N/D	N/D	N/D	N/D			Yes	5	
FREE CHLORINE	mg/L	N/A	N/A	N/A	N/A	N/A	N/A	0.63	0.21-0.99	0.71	Yes	2	
PH	s.u							7.4	7.6-9.2	8.1	Yes		
HERBICIDES	mg/L	N/D	N/D	N/D	N/D	N/D	N/D				Yes		

DISINFECTION BY-PRODUCTS													
HALO-ACETIC ACIDS HAA 5	ug/L	N/A	N/A	N/A	N/A	N/A	N/A	2.6	23-42	34	Yes	60	By-product of drinking water chlorination
TOTAL TRIHALOMETHANE	ug/L	N/A	N/A	N/A	N/A	N/A	N/A	13.7	23-48	31	Yes	80	By-product of drinking water chlorination
UNREGULATED												MRL	Minimum Reporting Level
VANADIUM	ug/L	3.97	4.65	7.88	3.97-7.88	5.5	1.01	2.39			N/A	0.2	
MOLYBDENUM	ug/L	N/D	N/D	N/D	N/D	N/D	N/D	1.05	<0.0003 - 0.0003 ppm	<0.0003	N/A	1	
STRONTIUM	ug/L	0.9	60.7	81.4	0.9-81.4	47.667	57.7	78			N/A	0.3	
CHROMIUM	ug/L	0.001	0.001	N/D	N/D-0.001	0.001	N/D	N/D			N/A	0.2	
HEXAVALENT CHROMIUM	ug/L	1.214	1.286	N/D	1.214- 1.286	1.25	0.056	0.032			N/A	0.03	

COLIFORM SAMPLING		Cross Valley Wells							Everett Water Supply			Limit	
COLIFORM BACTERIA SAMPLES	% Pos	<1%	<1%	<1%			<1%	<1%		0%	Yes	5% Pos	Everett collects 120-125 samples per month - CWWD collects 25 per month
2021 Lead and Copper Sampling Results		Cross Valley Wells				Everett Water Supply							
Parameter	Units	Ideal Goal	Action Level	90% Level	# exceed Action	Ideal Goal	Action level	90% level	# exceed Action	Complies	Major source listed by EPA		
LEAD	ppb	0	15	2	0 of 30	0	15	2	0 of 108	Yes	Corrosion of Household Plumbing		
COPPER	ppm	0	1.3	0.1383	0 of 30	1.3	1.3	0.093	0 of 108	Yes	Corrosion of Household Plumbing		



Total coliform bacteria monitoring is used to track microbial quality in the water distribution system. Everett collects 120-125 samples per month. Not more than 5 percent of the monthly total can be positive for total coliforms. 0 total coliforms were detected in Everett in 2023.

Cross Valley Water District collects 25 samples per month for a total of 300 annually, we had 0 (zero) samples in 2023 with positive coliform presence.

Fluoride is added to areas served by the City of Everett supply in carefully controlled levels for dental health.

The Washington State Board of Health updated and adopted WAC 246-290-460, fluoridation of drinking water on May 9, 2016, adopting the standard at 0.7 ppm.

Turbidity is a measure of the amount of particulates in water in Nephelometric Turbidity Units (NTU).

Particulates in water can include bacteria, viruses and protozoans that can cause disease. Turbidity measurements are used to determine the effectiveness of the treatment processes used to remove these particulates. The values reported are the lowest monthly percentage of samples that met the EPA turbidity limit and the highest single filtered water turbidity measurement obtained during the year. In 2023, no filtered water turbidity results were above the EPA 0.3 NTU limit so the lowest percentage was 100%. The plant targets production of filter water turbidities of 0.10 NTU or less.

Why Are We Sending This Report?

The Safe Drinking Water Act (SDWA) requires community water systems to provide customers with annual reports on the quality of their drinking water. This information is to raise consumer awareness of where their water comes from and to help them understand the process by which safe drinking water is delivered to their homes. All people are exposed to sources of disease and illness every day in many different ways. Typically, healthy people have normal immune systems that can help prevent diseases from many sources. Some people may be more vulnerable to contaminants in drinking water than the general population. Immuno-compromised persons such as persons with cancer undergoing chemotherapy, persons who have undergone organ transplants, people with HIV/AIDS or other immune system disorders, some elderly, and infants can be particularly at risk from infections. These people should seek advice about drinking water from their health care providers. EPA/CDC guidelines on appropriate means to lessen the risk of infection by *Cryptosporidium* are available from the Safe Drinking Water Hotline (800-426-4791). The information in this report has been collected and reported in accordance with the water quality standards established by the EPA and DOH. Cross Valley Water District is dedicated to providing you with the safest and most reliable water supply.

The Facts on Contaminants

The sources of drinking water (both tap and bottled water) include streams, rivers, lakes, ponds, reservoirs, springs, and wells. Drinking water, including bottled water may reasonably be expected to contain at least small amounts of some contaminants. A contaminant is defined as any substance in water including minerals. The presence of contaminants does not necessarily indicate that water poses a health risk.

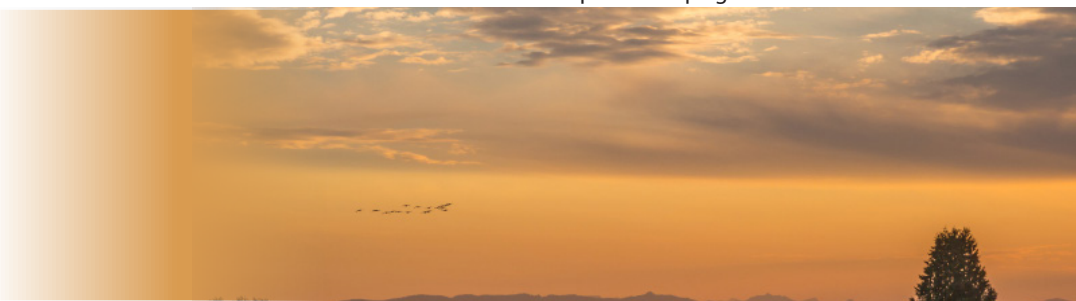
As water travels over the surface of the land or through the ground, naturally-occurring minerals, and in some cases radioactive material, dissolve in the water. Water can also pick up substances resulting from the presence of animals or from human activity.

Contaminants that may be present in source water are microbes, pesticides, herbicides, organic or inorganic chemicals, and radioactive minerals.

More information about contaminants and potential health effects can be obtained by calling the EPA's Safe Drinking Water Hotline (1-800-426-4791).

EPA Lead Statement:

If present, elevated levels of lead can cause serious health problems, especially for pregnant women and young children. Lead in drinking water is primarily from materials and components associated with service lines and home plumbing. Cross Valley Water District is responsible for providing high quality drinking water, and the highest concentration of lead present in samples was 2 ppb, significantly below the action level of 15ppb. However we cannot control the variety and type of materials used in plumbing components. When your water has been sitting for several hours, you can minimize the potential for lead exposure by flushing your tap for 30 seconds to 2 minutes before using water for drinking or cooking. If you are concerned about lead in your water, you may wish to have your water tested. Information on lead in drinking water, testing methods, and steps you can take to minimize exposure is available from the Safe Drinking Water Hotline or at <http://www.epa.gov/safewater/lead>.



SOURCE NAME	FLOW RATE (ln gpm)	WELL SCREEN DEPTH - FT.	PRESSURE ZONE	TREATMENT
Well 1	130	171-191	640	None
Well 3	350	208-238	640	None
Well 5	450	217-244	756 & 575	Filtration & Chlorination
Well 6	400	235-255	575 & 756	Filtration & Chlorination
Well 7	350	171-191	700	None
Well 7A	150	204-214	700	None
Well 7B	500	186-199	700	None
Well 8	350	174-244	640	None
Well 9	980	262-300	640	None
Well 10	700	220-271	575 & 756	Filtration & Chlorination
Woodlane Well	40	156-168	640	None
Everett (Surface Water)	N/A	N/A	Multiple	Filtration Chlorination Fluoridation

DO I RECEIVE GROUND WATER OR SURFACE WATER TO MY HOME?

Cross Valley Water District has several sources from which we draw water. One source is from our own wells listed above. Some of our customers also receive water that we purchase from the City of Everett source. This water is surface water that comes from the Sultan River (via Spada Reservoir), located approximately 30 miles east of Everett. This water is treated at the Lake Chaplin Treatment plant where Chlorine & Fluoride is added. Customers in the Fobes Hill, Swans Trail, Seattle Hill, Lowell Larimer Road and the general Clearview area receive water from the City of Everett source. All other customers receive ground water from Cross Valley Water District wells.

Source map on page 2.

If you do not know from which water source your water is drawn, please call our office and we can assist you.

CONSERVATION KITS

Each year we have a limited number of indoor and outdoor conservation kits available at our office. Please stop by and pick up a kit!



BOARD OF COMMISSIONERS:

Dave Hutley
Ginger Desy
W. E. (Skip) Schott

GENERAL MANAGER:

Mike Johnson
WATER QUALITY:
Matt Wood

O&M MANAGER:

Dave Calvo

В этом сообщении содержится важная информация о воде, которую вы пьёте. Попросите кого-нибудь перевести для вас это сообщение или поговорите с человеком, который понимает его содержание.

Este informe contiene información importante acerca de su agua potable. Haga que alguien lo traduzca para usted, o hable con alguien que lo entienda.

此报告包含有关您的饮用水的重要信息。请人帮您翻译出来，或请看懂此报告的人将内容说给您听。